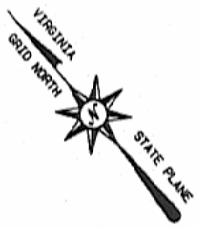


L.INE	BEARING	DISTANCE
L1	S49°50'32"E	120.09
L2	S60°17'45"E	69.63
L3	S47°46'17"E	57.15
L4	S32°43'08"E	117.74
L5	S71°10'16"E	11.57
L6	S07°04'09"E	16.51
L7	S20°17'28"E	272.20
L8	S35°08'53"E	116.60
L9	S07°35'36"E	19.37
L10	S30°06'32"E	75.29
L11	S71°39'38"E	72.05
L12	S13°56'38"E	64.71
L13	S35°55'33"E	109.14
L14	S10°46'57"E	29.78
L15	S05°41'01"E	50.73
L16	S37°52'58"E	72.66
L17	S01°39'34"N	33.64
L18	S00°26'13"E	57.45
L19	S40°01'49"E	137.20
L20	S27°58'00"E	43.81
L21	S27°58'00"E	03.10
L22	S10°35'33"E	20.75
L23	S71°25'08"E	42.03
L24	S00°50'12"E	60.97
L25	S42°42'32"E	218.20

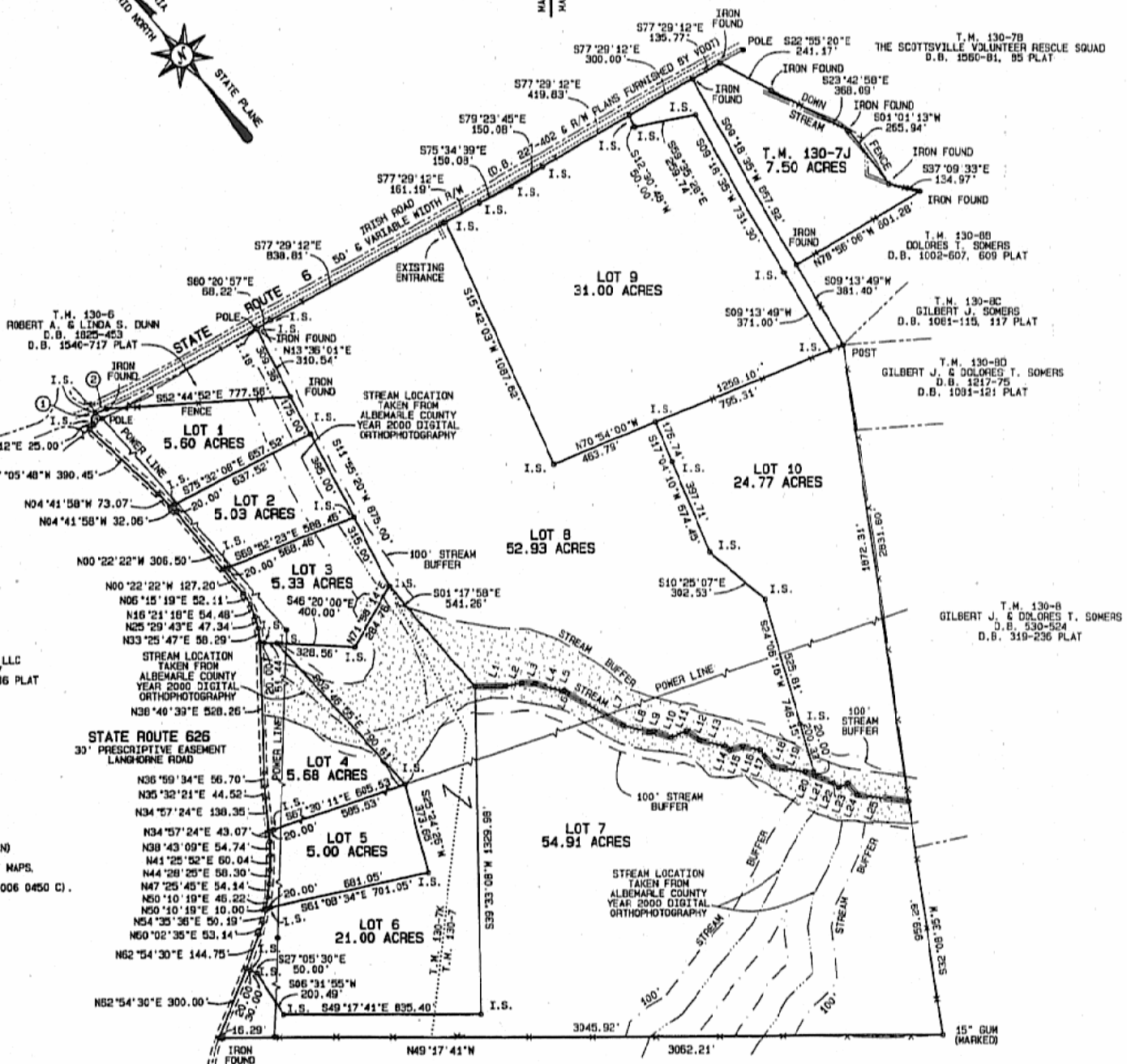


- ① A = 115°42'59"  
R = 27.70'  
L = 55.84'  
T = 44.08'  
C = 46.91'  
CB = N50°45'20"E
- ② A = 0°59'49"  
R = 2090.00'  
L = 49.44'  
T = 24.72'  
C = 49.44'  
CB = S71°52'56"E

T.M. 129-6  
SCOTTLAND FARM LLC  
D.B. 2314-97  
D.B. 1194-245 & 246 PLAT

DENOTES APPROX. AREA  
LOCATED IN ZONE A  
(100 YEAR FLOOD PLAIN)  
ACCORDING TO THE  
FLOOD INSURANCE RATE MAPS,  
DATED APRIL 2, 1990,  
(COMMUNITY PANEL 510006 0450 C).

SCALE: 1" = 300' DATE: JULY 21, 2004  
REVISED: AUG. 13, 2004



MATCH LINE

T.M. 129-10A  
NOAH DEFALCO  
D.B. 1984-728  
D.B. 499-632 & 633 PLAT

9/21/04  
WOF