

LOT 7
 ROCK CASTLE CREEK
 SEE UNRECORDED PLAT BY ROGER W. RAY & ASSOC., INC.
 LAST DATED AUGUST 13, 2004

MATCH LINE
 MATCH LINE

STATE ROUTE 626
 30' PRESCRIPTIVE EASEMENT
 LANGHORNE ROAD

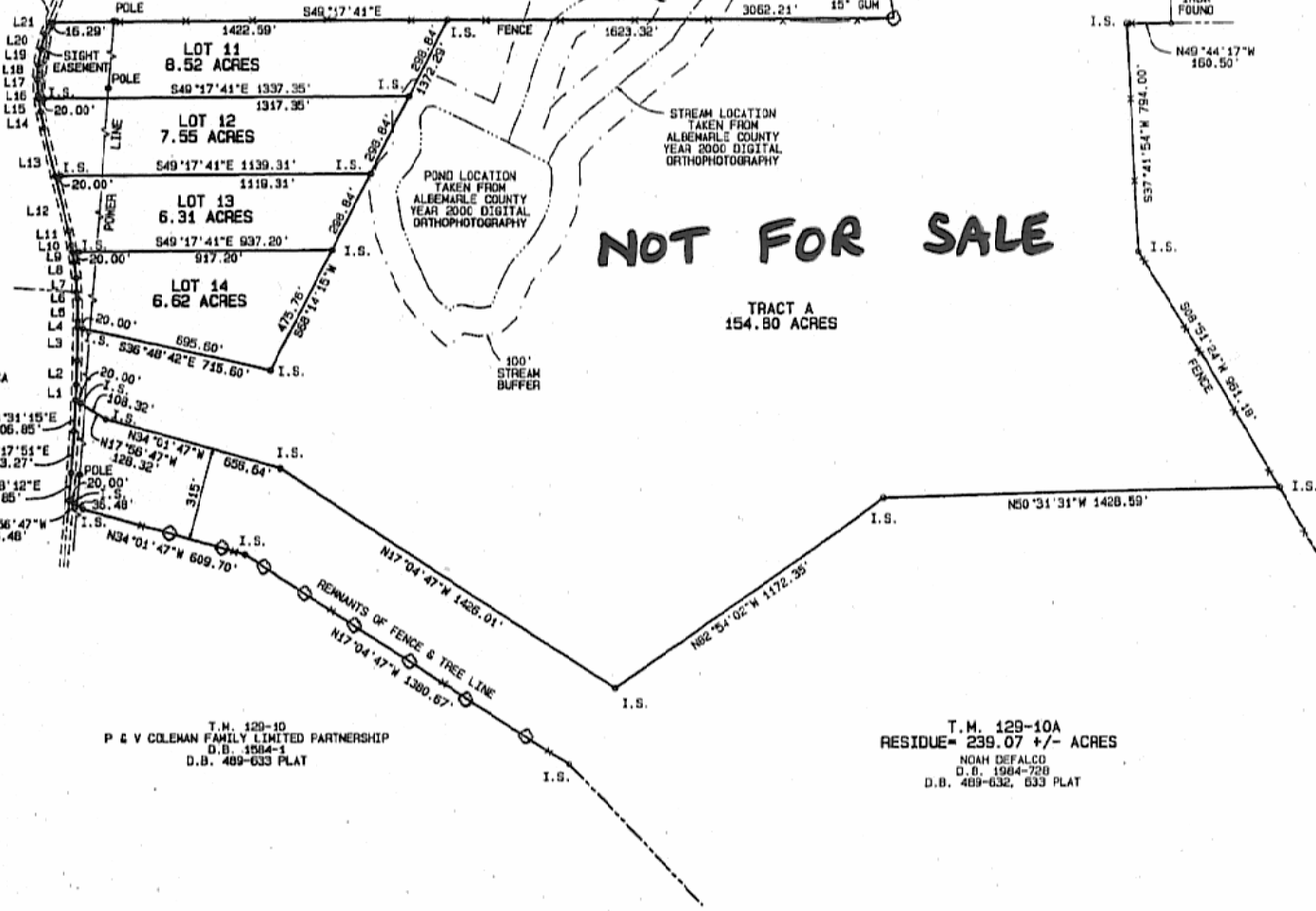
T.M. 129-6
 SCOTTLAND FARM, LLC
 D.B. 2314-07
 D.B. 1104-245 PLAT

T.M. 129-6A
 ADOLPH J. & HELEN K. MEDICA
 D.B. 1123-163, 166 PLAT

T.M. 129-10
 P & V COLEMAN FAMILY LIMITED PARTNERSHIP
 D.B. 1584-1
 D.B. 489-633 PLAT

IRON FOUND
 562°18'30"E 567.69'
 537°39'07"E 547.96'
 DOUBLE 15" ASH
 STREAM
 100'
 STREAM BUFFER
 797.95'
 FENCE
 598°45'15"W 797.95'

T.M. 130-8
 J. GILBERT & DOLORES T. SOMERS
 D.B. 530-524
 D.B. 319-326 PLAT
 D.B. 260-113 PLAT



T.M. 130-12
 PETER E. O'BRIEN
 D.B. 436-7
 D.B. 90-316 PLAT

LINE	BEARING	DISTANCE
L1	N43°31'15"E	51.69
L2	N42°04'23"E	81.75
L3	N41°35'12"E	116.36
L4	N41°35'12"E	21.96
L5	N39°33'04"E	81.07
L6	N39°33'40"E	22.91
L7	N38°50'48"E	50.48
L8	N39°48'32"E	55.92
L9	N30°56'03"E	36.09
L10	N30°56'03"E	23.73
L11	N28°04'54"E	51.39
L12	N26°12'52"E	197.60
L13	N26°12'52"E	188.33
L14	N29°09'26"E	57.85
L15	N32°54'39"E	45.97
L16	N32°54'39"E	13.89
L17	N37°11'36"E	53.29
L18	N43°05'46"E	52.85
L19	N40°31'29"E	56.36
L20	N20°50'34"E	52.56
L21	N62°04'36"E	42.52

T.M. 129-10A
 RESIDUE= 239.07 +/- ACRES
 NOAA DEFALCO
 D.B. 1984-728
 D.B. 489-632, 633 PLAT

SCALE: 1" = 300' DATE: AUGUST 13, 2004
 REVISED: SEPTEMBER 13, 2004

MATCH LINE
 MATCH LINE